

# SLCMA Catchment News



August 2019

Office: 101 Sarina Beach Rd  
Postal: PO Box 682  
Sarina QLD 4737  
Phone: (07) 4956 1388  
[www.sarinalandcare.org.au](http://www.sarinalandcare.org.au)  
Email:  
admin@sarinalandcare.org.au

**Office opening times:**  
**Monday to Friday**  
**9-2pm**  
**(other times, by appointment only)**

### Staff

#### Administration Officer

Kristy Thomsett

#### Coordinator

Saskia von Fahland

#### Call us for information:

- ◇ Weed management
- ◇ Plant identification
- ◇ Land management
- ◇ Local projects
- ◇ FREE property visits
- ◇ Land for Wildlife

#### Volunteer opportunities:

SLCMA Community Volunteer Program,  
Wednesday 9-12noon

#### Native plants available for purchase

#### SLCMA Executive 18/19

**Chair:** Mark Evans

**Vice-chair:** Karen May

**Treasurer:** -

**Secretary:** Grace Tipping

#### Executive members:

Sandy Evans  
Lachlan McBride



## SLCMA News!

**SLCMA Calendar 2020!** We would love to see your photos of local landscapes, wildlife, plants; for next years SLCMA Calendar. Photos need to be of good quality/size. Please send your photos to admin@sarinalandcare.org.au with the name of the photographer & location. If you need assistance to download photos, feel free to give us a call and arrange a time to meet at the office.

Did you know we have producing the SLCMA calendar since 2007! The calendar is a great opportunity to showcase the beauty of the Sarina Catchment and is also a good reference for important dates such as cattle sales and environmental awareness events.

Thankyou to our members and volunteers for contributing photos over the years and to Mackay Regional Council, DBCT Management and DBCT PL for supporting the production of the annual calendar.

**SLCMA Annual General Meeting coming soon**—The AGM is a great opportunity to thank our volunteer management committee for their support and to find out what projects we have undertaken throughout the year. Some members may also be interested in nominating to be on the SLCMA Management Committee. If this is you, please contact us for more information.



**Celebrating 30 Years of Landcare:** SLCMA is proud to be part of the celebrations during Landcare Week (2 -8 September 2019) to acknowledge 30 years of **Landcare across Australia**. To help celebrate, SLCMA is inviting volunteers and community members to join us for a seed collecting and plant identification Walk & Talk, along Sarina Inlet Trail, on Wednesday 4 September, 9am-12noon.



Sarina Inlet Trail, 2005 under construction and opening



## New Quikshade cover :)

**Thank you** to Dalrymple Bay Coal Terminal Pty Ltd for their recent sponsorship to purchase a new cover for our Quikshade and trolley. This will be well utilised by SLCMA at events and displays in our local community.

The original quikshade was purchased in 2009 with funding from DBCT PL, and we thank them for their continued support. We think 10 years is a pretty good innings for the original quikshade, and we are very thankful for the replacement cover & trolley (both of which were much needed).



Photos: S von Fahland



The SLCMA Calendars have also captured our brushes' with fame, including the Irwin family and Costa Georgiadis.



# Land for Wildlife Program: De Moleyns Lagoon Walk & Talk



Landholders in the Land for Wildlife Program were treated to an informative “Walk & Talk” at De Moleyns Lagoon on 17 August. The field trip was a great opportunity to find out about the lagoon, the rehabilitation process so far, as well as see first-hand a variety local bird species utilising the lagoon and surrounding vegetation.

A big thankyou to our guest speakers: Daryl Barnes (Birdlife Mackay), Shelley Molloy and Jonathon Dykyj (Mackay Regional Council) & Kade Slater (PCL), for sharing their knowledge and experiences with us. Also, Thankyou to our Land for Wildlife Landholders and Members of Birdlife Mackay for coming along. Participants also received a free native plant from the SLCMA Community Nursery, supported by Queensland Government for Climate Week.

De Moleyns Lagoon is located within an 153ha reserve, near Mirani. The reserve is registered with the Land for Wildlife Program and is managed by Mackay Regional Council. The lagoon is an environmentally and culturally important wetland area situated within a floodplain dominated by agriculture. It is home to a large variety of vegetation communities, including the Endangered Regional Ecosystem *Melaleuca viridiflora* woodland. Local stakeholders have worked together for many years to restore and transform the site to an area which is now a valued natural habitat. Activities have included control of aquatic weeds, revegetation, controlled burn and bird monitoring.

Birdlife Mackay regularly visit the area to observe and monitor the birdlife around the lagoon. Since the lagoon has been restored there has been significant changes in bird species, bird populations and bird behaviours in and around the lagoon. Paperbark trees growing in the shallows along the edge



of the lagoon are being used as nest sites for water birds, such as the australasian darter, great egret and little pied cormorants. Bar-breasted honeyeater, leaden flycatcher and willie wagtail nests are also now seen in these trees every year. Click [here](#) to find out more about the De Moleyns Lagoon or visit [www.wetlandinfo.des.qld.gov.au](http://www.wetlandinfo.des.qld.gov.au)



Photos: S von Fahland

## National Tree Day—Supporting local schools

Students from **Homebush State School** participated in National Tree Day on 15 August, planting 45 native plants around their school. The students enjoyed planting native trees around their oval to help with providing shade for students as well as habitat for native wildlife; they also did some infill planting with smaller natives in their existing gardens, with the aim to increase groundcover and reduce weed growth. The native plants were provided to the school by the Mackay Regional Council Free Plant Program as well as the SLCMA Community Nursery via funding through the QLD Government Climate Week 2019. Plant guards were installed to protect the plants around the oval, these were supplied by SLCMA via funding through the Sarina Community Bank - Community Grants Program.

We were also able to assist **Alligator Creek State School** with their National Tree Day planting event on 26 July, through the provision of native plants and technical advice. Unfortunately due to illness, we weren't able to make it on the day, but thanks to the support of school staff, parents and other groups such as Conservation Volunteers Australia, from all reports it was a great event. The students planted around the school grounds and in their adjacent bushland.

Our school support program is made possible through support received from Mackay Regional Council Natural Environment Levy.



Photos: contributed

Above: Homebush students ready for planting

Below: Alligator Ck students planting in their bushland



## SLCMA Community Nursery “Plant of the Month”

This month's 'Plant of the Month' is **Coastal vitex** *Vitex trifolia*

**Family:** Verbanaceae

**What is in a name?** *Vitex* Latin *vita* life; *trifolia* Latin *tri* three and *folius* leaved.

**Form:** Low shrub, 1-3m; sprawling or upright.

**Leaves:** Opposite, trifoliate sometimes simple; central leaflet largest; leaflets stalkless; elongated oval tapering to the base; dull green, hairy above; pale whitish, hairy below.

*Continued over page..*

## “Plant of the Month” : Coastal vitex (*Vitex trifolia*) continued...

**Flowers:** Pale blue or purple; white throat; tubular with extended bottom lobe; appear March to October

**Fruit:** Black, globular 0.6cm diameter, 4 seeds in hard shell.

**Distribution:** Eastern QLD, Top end NT, Northern WA

**Habitat:** Coastal sand dunes, littoral rainforest

**Notes:** Useful for coastal plantings; needs good drainage; grow from cuttings or seed.

The "Plant of the Month" is currently available from the SLCMA Community Nursery.

Landcare members are eligible to receive 1 free "Plant of the Month", throughout that month. This and other native plant species are also available for purchase at \$3 each. All plants are grown from locally sourced seed in the SLCMA Community Nursery by SLCMA staff and the SLCMA Volunteer team.



Image: S von Fahland

## Team work pays off at Plane Creek Revegetation Site

Madeira vine leaf & tuber

SLCMA is currently halfway through delivering the 3 year "Riparian Rehabilitation after Cyclone Debbie" Project funded through Queensland Government Community Sustainability Action Grant. A part of this project is to undertake remediation activities within the Plane Creek Revegetation Site. So far this has involved a range of activities including revegetation, weed control, community working bees and litter collections.

On the 23<sup>rd</sup> of August members of the Mackay Regional Council Pest Management Team, Maria Ferraro and Mark Oswald joined forces with Pamela Martin and Glen Harris from the Sarina Beach Protection Team, along with Peter Whitehead, SLCMA Revegetation Officer, to treat **Madeira vine** at the Plane Creek Revegetation Site (Brewers Road Park).

Madeira vine is restricted invasive matter declared under the Biosecurity Act 2014, it is considered one of Australia's worst environmental weeds. The combination of fleshy leaves and thick aerial tubers makes this a very heavy vine, it smothers vegetation and can easily break branches and bring down entire trees.

The team spent the morning scraping and painting vines and digging out tubers. This is the most effective way to treat and minimise the spread of Madeira Vine. Simply spraying Madeira Vine is not an option as spraying only kills the vine and does not kill the tubers. If the vine dies the tubers drop to the ground and subsequently grow into new plants.



Photos: contributed

Everyone enjoyed working together towards a common goal, learning new skills, helping each other, reducing the impact of this vine on the environment, and paving the way for new projects in the area, all while having fun. Teamwork makes the Dream work!

The SLCMA Revegetation team have also been working to remove **Mile-a-minute** (*Ipomoea cairica*) along the roadside edge of the site. Mile-a-minute is a serious environmental weed in the region, which has the ability to smother native vegetation particularly along creekbanks and coastal areas.

Click here find out more about [Madiera vine](#) or [Mile-a-minute](#) or, visit Biosecurity Queensland website: [www.biosecurity.qld.gov.au](http://www.biosecurity.qld.gov.au)

## SLCMA Community Volunteer Program

Our SLCMA Community Volunteers have enjoyed a great month of activities including:

- ◆ Exploring Grasstree and Mick Reedy Beach bushland for native seed. We explored some of the tracks through the bush and were amazed at some of the treasures we can find including *Lomandra multiflora*, *Diospyrus geminata*, *Pittosporum ferrugineum*.
- ◆ Keeping a watchful eye on the plants in the food garden. A big thankyou to Peter for keep the plants well watered and cared for.
- ◆ Fun in the nursery— keeping those weeds in check, plants fertilized, seeds cleaned and sown.

There is always something fun to do and learn at our volunteer mornings, thanks to our great team of volunteers!

If you would like to volunteer in your local community and meet new people while learning about local native plants and their propagation, come along to the SLCMA Community Volunteer morning, every Wednesday, 9am to 12noon. The SLCMA Community Volunteer Program is proudly supported by Mackay Regional Council, Natural Environment Levy. For more details contact SLCMA on 4956 1388.



Photos: S von Fahland



Above: Seed collecting  
Middle: Enjoying a cuppa!  
Below: Food garden growing strong



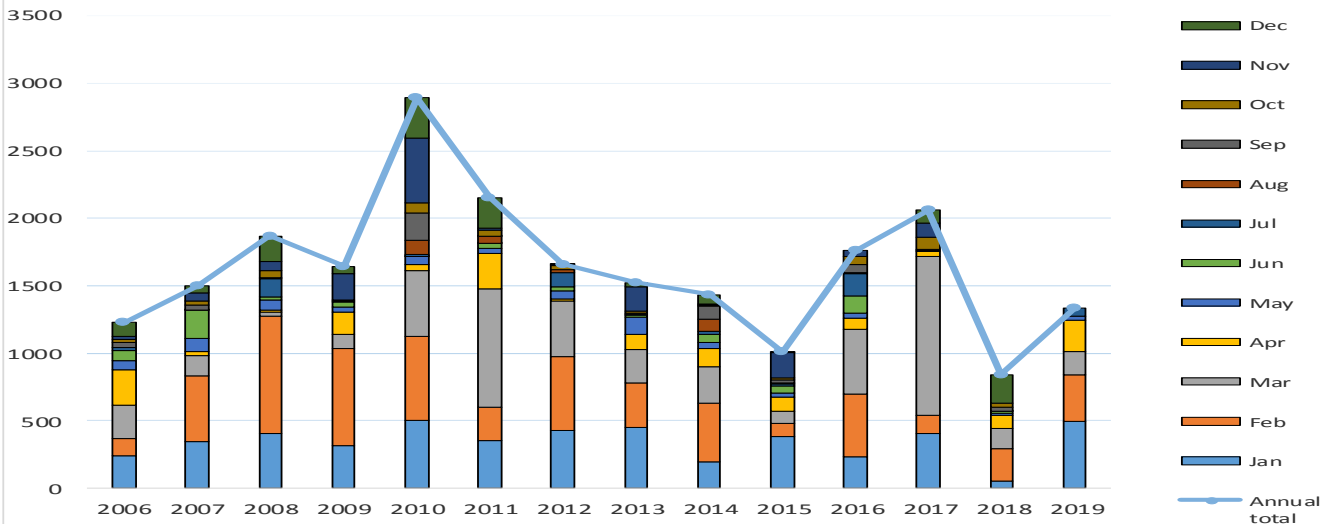
# What SLCMA Membership does for you !

A membership with SLCMA has many rewards:

Office: 101 Sarina Beach Rd  
 Postal: PO Box 682  
 Sarina QLD 4737  
 Phone: (07) 4956 1388  
[www.sarinalandcare.org.au](http://www.sarinalandcare.org.au)  
 Email:  
 admin@sarinalandcare.org.au

- ◇ Easy access to Natural Resource Management information and extension
- ◇ Monthly newsletter, meeting minutes, progress and project reports
- ◇ A vote on issues in your catchment
- ◇ A say in the types of projects applied for
- ◇ Up to 10 free local native seedlings/year from the SLCMA Community Nursery
- ◇ Invitations to Natural Resource Management field days and workshops
- ◇ Copy of the SLCMA Annual Report
- ◇ Discounts on purchases of books for sale

Monthly rainfall for SLCMA Office, 2006 -2019 (inc annual total)



**Membership renewals for 19/20 are now due :)**

**Find us on facebook**



**A partnership for the natural resource management of catchments in the Central Queensland Coast Bioregion: Pioneer, Sarina & Whitsunday Catchments.**

## Just for fun!

Sphen and Olly are out fishing and they are catchin tons and tons of fish.

Olly turns to Sphen and says we should put a mark on this spot for another time because this is really good fishing.

So Sphen pulls out a Niko pen and puts a huge X on the boat were he and Olly were standing.

Olly looks at this and says "Sphen you idiot what do we do if we take a different boat".



**SLCMA is proudly supported by:**



Sarina Community Bank® Branch  
 together with  
**RURAL BANK**  
 Bendigo Bank

Proudly Printed By  
**MICHELLE LANDRY MP**  
 Federal Member for Capricornia  
 If you have any issues, don't hesitate to contact my office

Shop 8, Sarina Beach Road Shopping Centre, Sarina 4743  
 (07) 4943 2722 | [www.MichelleLandry.com.au](http://www.MichelleLandry.com.au)  
 michelle.landry.mp@aph.gov.au | MichelleLandryMP  
 Authorised by M. Landry, 159 Denison Street, Rockhampton QLD 4700